

# DEWITT HISTORY MUSEUM

Grand Opening Van Tour - February 27, 2018





# DEWITT GENERAL HOSPITAL

Feb. 27, 1944 - Dec. 31, 1945



# DEWITT STATE HOSPITAL

June 25, 1946 - March 20, 1972



# PLACER COUNTY GOVERNMENT CENTER

July 1, 1972 - Present

1

DeWitt General Hospital, 1945





**Administration Building  
and Officers Quarters  
1944-1945**



Administration Bldg.  
Officers & Nurses Quarters  
DeWitt General Hospital  
Akeley Calif.

**DeWitt General Hospital  
Opening Ceremony  
February 27, 1944**





**DeWitt Chapel and  
B Avenue patient wards  
1944-1945**

**Red Cross nurses  
beside DeWitt Chapel**



**Interior view of  
DeWitt Chapel  
1944-1945**



CATHOLIC CHAPLAIN

ROLY ROLY ROLY

**Comedian, Joey Brown  
inside the Post Theater  
April 2, 1945**



**Post Theatre**  
**11596 D Avenue**  
**1944-1945**



Post Theatre  
Do Witt General Hospital - Auburn, Calif.



**Interior view of patient wards**





**DeWitt Hospital had 44 solaria  
and 48 sun porches furnished  
throughout the base and by  
donation to the "Solarium Fund."  
Some were dedicated in memory  
of fallen soldiers.**



**Building 209 included a  
Post Office and Cantina.**



**DeWitt State Hospital Canteen**

**1966**





**“Bingo Party” inside the DeWitt  
Red Cross Recreational Auditorium  
1944-1945**



**Kathro Frank and local students  
perform a puppet show for patients.**

**January 24, 1945**



**Occupational Therapy was  
a main component of the  
rehabilitation program at  
DeWitt General Hospital.**



**This shop once occupied the  
empty field between C and D Avenues.  
1944-1945**





# FACTS AND FIGURES

## **DEWITT GENERAL HOSPITAL:**

- 16 "Type A Pavilion Style" military hospitals were constructed in the US during WWII.
- DeWitt General Hospital is the only known surviving example with architectural integrity intact.
- Over 220 acre site
- \$4,000,000 to construct
- Telephone exchange operated 24 hours a day with 160 extensions throughout hospital and handled 1,500 calls per day
- February 27, 1944 - Flag Raising and Open House attended by over 4,000 citizens
- 1,727 bed capacity for patients
- Intended to house 2,300 people
- At opening ceremonies, personnel totaled 358:  
43 commissioned officers, 215 enlisted men,  
120 civilian employees
- By January 1, 1945:  
3,776 patients had been admitted  
1,424 patients were being treated

- Summer 1945 - Rapid evacuation of casualties from European and Mediterranean Theatres of Operation
- June 12, 1945 - 200 POWs arrived to be housed at Camp Flint and help with engineers, utilities, supply, laundry, and mess.
- Peak load of 2,310 reached on August 30, 1945.  
At that time, there were:  
123 Officers  
2 Warrant Officers  
187 Army Nurse Corps Officers  
539 Enlisted Men  
192 Enlisted Women  
479 Civilian Employees
- In total, 9,741 patients had been admitted during the two years of operation

## **DeWitt State Hospital:**

- Opened June 25, 1946
- Peak capacity reached in 1953 with 3,101 patients and 486 mental health staff members

# Enjoy everything the Placer County Museums have to offer. All museums are FREE!



## Placer County Museum

101 Maple Street  
Auburn, CA 95603

Open Daily  
10:00 am – 4:00 pm



## Bernhard Museum Complex

291 Auburn Folsom Road  
Auburn, CA 95603

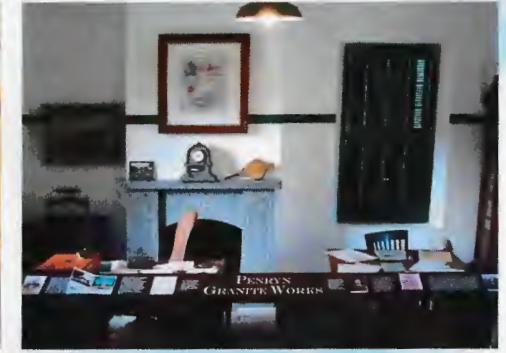
Open Tuesday - Sunday  
11:00 am – 4:00 pm



## Gold Rush Museum

601 Lincoln Way  
Auburn, CA 95603

Open Friday - Sunday  
10:30 am – 4:00 pm



## Griffith Quarry Museum

7504 Rock Springs Roads  
Penryn, CA 95663

Open Saturday - Sunday  
Noon – 4:00 pm



## DeWitt History Museum

2985 Richardson Drive  
Auburn, CA 95603

Open Wednesdays  
Noon – 4:00 pm



## Foresthill Divide Museum

24601 Harrison Street  
Foresthill, CA 95631

Open Weekends May - Oct.  
Noon – 4:00 pm



## Golden Drift Museum

232820 Main Street  
Dutch Flat, CA 95714

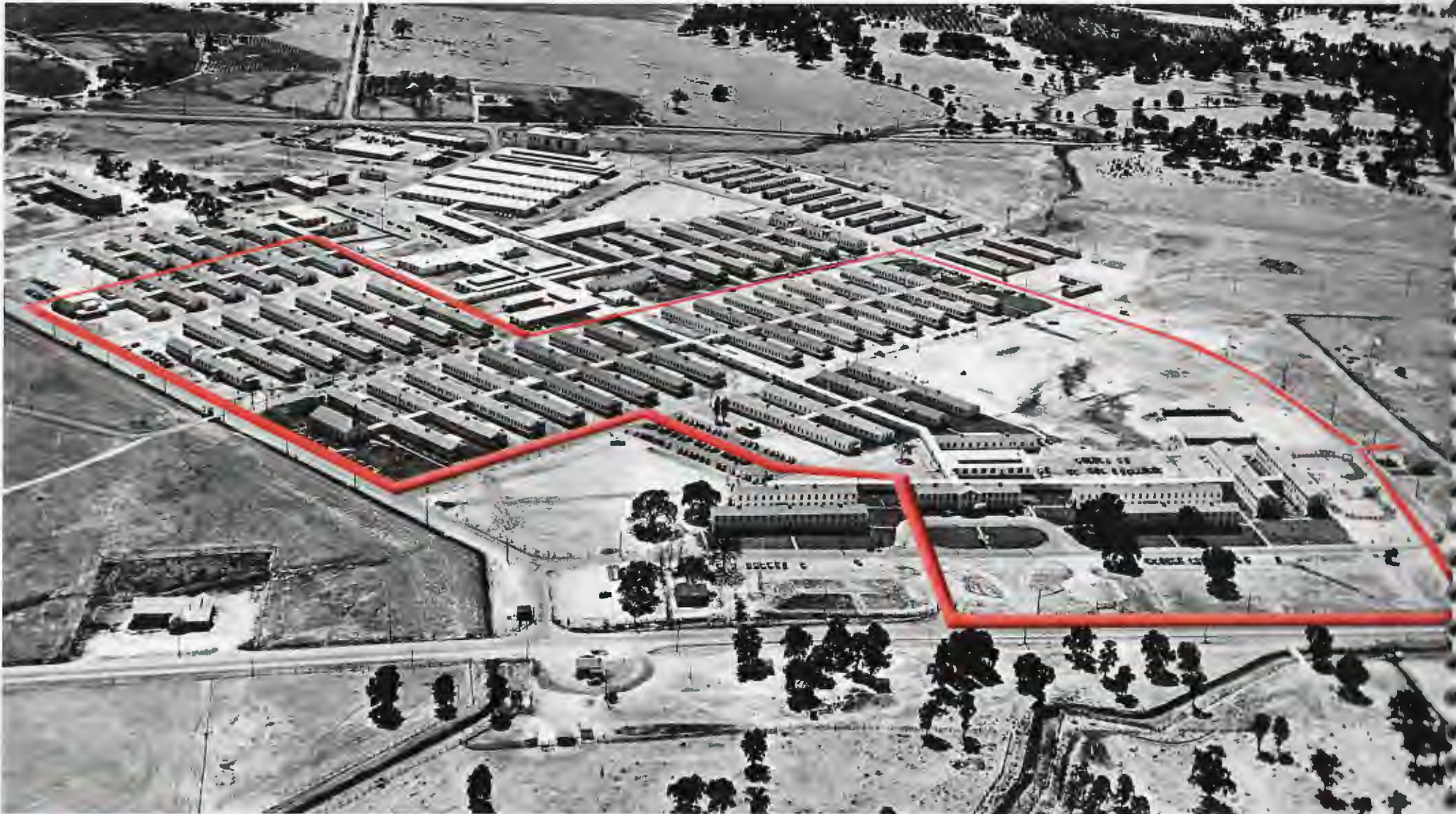
Open Weekends  
Memorial Day - September,  
Noon – 4:00 pm



## Old Town Auburn Walking Tour

Departs from  
101 Maple Street  
Auburn, CA 95603  
Saturdays at 10 am sharp

# Van Tour Road Map



**PLACER COUNTY  
MUSEUMS**

[Placer.ca.gov/museums](http://Placer.ca.gov/museums)

COUNTY  
OF  
**Placer**