

STATEMENT OF ARMAMENT AT
 FORT Mc DOWELL, CAL.,

-----March 1, 1918.-----

BATTERY	ORIGINALLY INSTALLED						In place March 1, 1918.	To remain in service as per E.D. 662A(SF)F.	To be removed as indicated in E.D. 662A(SF)F.
	GUN AND MORTAR			CARRIAGE					
	SIZE	MODEL	NO.	KIND	MODEL	NO.			
Drew Exp. # 1.	8-inch	1888	36	Barbette	1892	6	No. (Removed 1917). No. (Removed 1917). No. (Removed to Fort Miley 1916). No. (Removed to Fort Miley 1916).		
Wallace Exp. # 1.	8-inch	1888	11	Disap.	1896	28			
Ledyard Exp. # 1.	5-inch	1900	1	Barbette	1903	14			
" Exp. # 2.	"	1900	7	"	1903	15			
FORT MASON, CAL.									
Burnham Exp. # 1.	8-inch	1888	4	Disap.	1896	32	No. (Removed to Fort Stevens, 1909).		

REPORT OF COMPLETED WORKS -- SEACOAST FORTIFICATIONS
(Gun and Mortar Batteries)

COAST DEFENSES OF SAN FRANCISCO, CAL.
FORT. McDOWELL,
BATTERY DREW
No. of guns 0** Caliber 8" Carriage N. Dis.

Form 1 Corrected to MARCH 1, 1920

Battery commenced -----	1898	Source of electric current -----	Battery plant. 5-h.p. Hornsby-Akroyd oil engine belted to 2.65 k.w., 125-v. Westinghouse generator.
Battery completed -----	1898	Max. kv. required for lights -----	7-k.w.
Date of transfer -----	May 1, 1900	Max. kw. required for motors -----	No motors required.
Material of construction -----	Concrete.	Present condition of battery -----	Good.
Portland or Rosendale cement -----	Portland.	Rooms wet or dry -----	Damp.
Cost to date of transfer -----	\$34,836.82	How ventilated -----	Natural draft. 6" vent from magazine terminating at traverse wall.
Connected to water supply -----	Yes.	Remarks-----	
Connected to sewer -----	Yes.		
Type of latrine -----	Syphon.		
Type of data transmission -----	Telephone.		
Elevation intr. crest of battery -----	255.14		
Datum plane -----	M.L.L.W.		

ARMAMENT.

Emplacement or mortar No.	Guns or Mortars					Carriages				
	Cal. length	model	Serial No.	Manufacturer	mounted	Type	model	Serial No.	Manufacturer	Motor
1										
2										
3	** ONE EMPLACEMENT, GUN AND CARRIAGE REMOVED 1918.									
4										
5										
6										
8										

HOISTS.

Emplacement Number	Type	Delivery	Motor					Date of transfer	Remodeled for long points.
			Serial No.	Maker	H.P.	Volts	RPM		
1									
2									
3			NO HOISTS REQUIRED.						
4									

See Index Plat. Rev. May 22, 1936 - Battery no longer under control of H.D. Commander. Magazines used for post storage purposes.

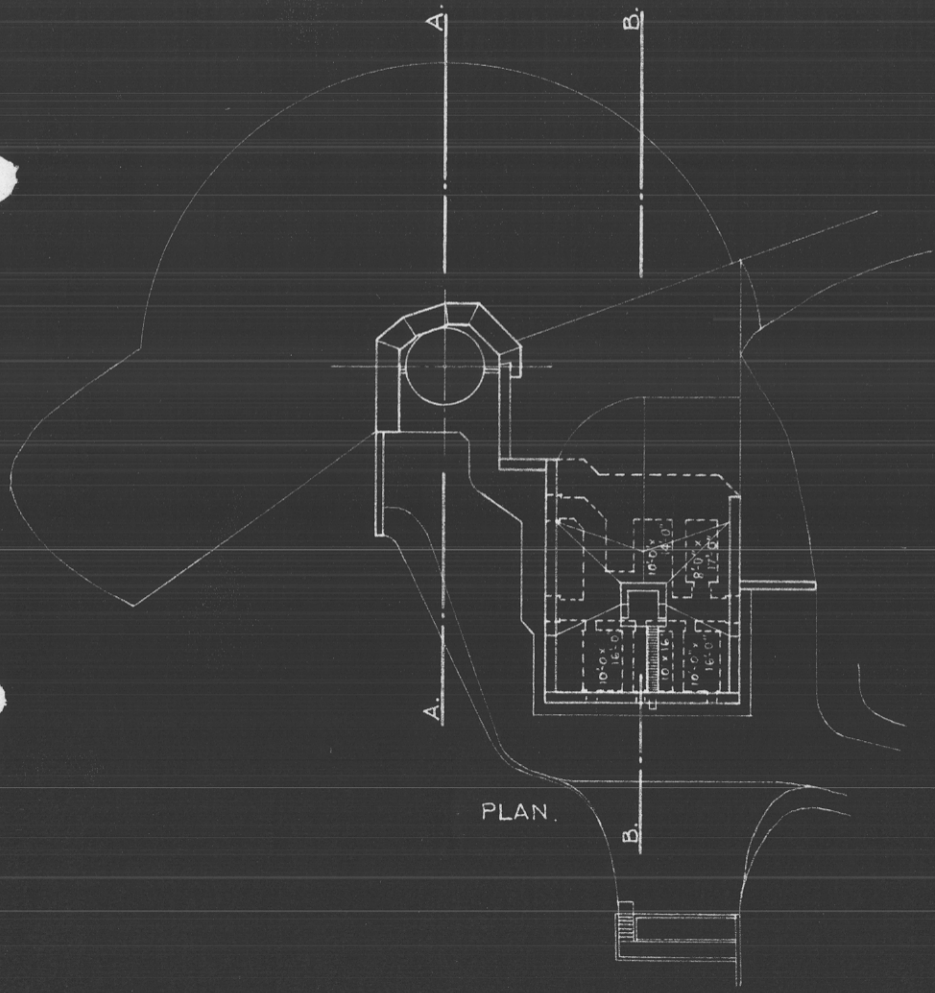
REPORT OF COMPLETED WORKS - SEACOAST FORTIFICATIONS
(BATTERY PLAN)

CORRECTED TO DEC. 1919.

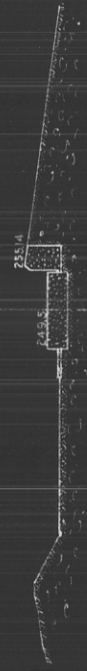
FORM-7

COAST DEFENSES OF SAN FRANCISCO, CAL.
FORT MCDOWELL
BATTERY DREW

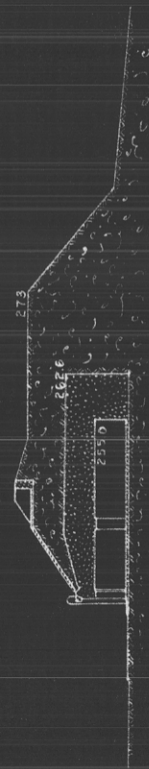
NO. OF GUNS 0: CALIBER —: CARRIAGE 0.
EMPT. FOR 8" GUN NONDISAPPEARING CARRIAGE



PLAN.



SECTION - A - A.



SECTION - B - B.



REAR ELEVATION.

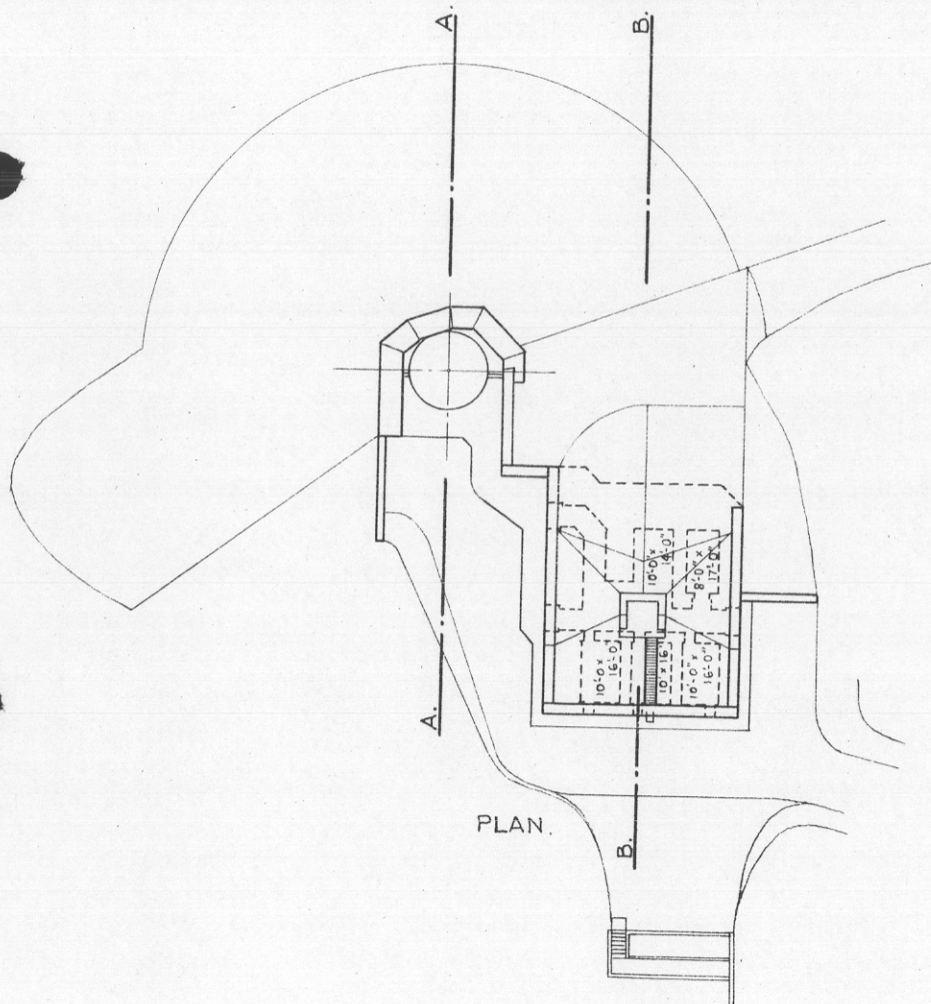
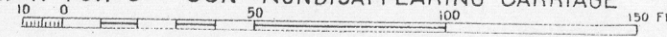
REPORT OF COMPLETED WORKS ~ SEACOAST FORTIFICATIONS
 (BATTERY PLAN)

CORRECTED TO DEC. 1919.

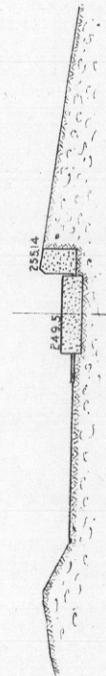
COAST DEFENSES OF SAN FRANCISCO, CALIF.
 FORT MCDOWELL
 BATTERY DREW

NO. OF GUNS 0: CALIBER — : CARRIAGE 0.
 EMPT. FOR 8" GUN NONDISAPPEARING CARRIAGE

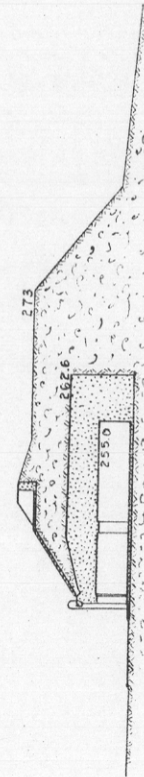
FORM-7



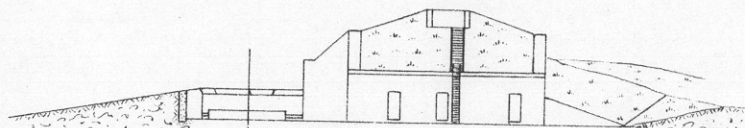
PLAN.



SECTION - A. A.



SECTION - B. B.



REAR ELEVATION.

COAST DEFENSES OF San Francisco, California

FORT McDowell BATTERY Drew No. of GUNS: 1 CALIBER: 8"

	EMPLACEMENT NUMBER 1.		EMPLACEMENT NUMBER 2.		EMPLACEMENT NUMBER 3.		EMPLACEMENT NUMBER 4.	
	FROM.	TO.	FROM.	TO.	FROM.	TO.	FROM.	TO.
1-a. Azimuth. _____	116°45½'							
b. Distance. _____	1956.11							
2-a. Model of Gun. _____	1888							
b. " " Carriage. _____	1892							
c. Type of " _____	Non Dis.							
3- Elevations of. _____								
a. Gun trunnions (in battery). _____	257.35							
b. Interior crest. _____	255.14							
c. Loading platform. _____	242.50							
4- Angle of depression. _____	5° 07'							
5- Limiting azimuths of field of fire as determined by: _____								
a. Construction of emplacement. _____	01	01	01	01	01	01	01	0
b. Interference by adjacent emplacements. _____	250°25'		117°50'					
c. Interference of other obstacles external to emplacement. _____	No interference.							
d. Position of Ordnance stops. _____	250°26'	267°15'						
	None Fitted							

NOTES.

1. Azimuth and distance of emplacement No.2 are given with reference to No.1; of No.3, with reference to No.2, etc. Azimuth and distance of No.1, are given with reference to Battery Wallace. Gun #1. Latitude - 37°51' - 869.3 meters
Longitude - 122°26' - 565.5' "
3. Above plane of M.L.L.W.
- 5-c. Nature of obstacles: Topography of Angel Island.
- 2-c. Use one of following abbreviations or designations: Dis.; Nondis.; Alt. gun-lift; Turret; Casemate; Ped.; B.P.

Superseded

REPORT OF COMPLETED WORKS -- SEACOAST FORTIFICATIONS
(Gun and Mortar Batteries)

COAST DEFENSES OF SAN FRANCISCO, CAL.
FORT McDOWELL,
BATTERY WALLACE
No. of guns 0** Caliber 8-INCH Carriage Dis. LF

Form 1. Corrected to MARCH 1, 1920

Battery commenced-----	1899.	Source of electric current-----	Battery Plant: 10-h.p. Hornsby-Akroyd Oil Engine belted to 6-k.w. 125-v. Eddy Generator.
Battery completed-----	1900.		
Date of transfer-----	Aug. 1, 1900.	Max. kv. required for lights-----	2.3 k.w.
Material of construction-----	Concrete.	Max. kw. required for motors-----	No motors.
Portland or Rosendale cement-----	Portland.	Present condition of battery-----	Good.
Cost to date of transfer-----	\$20,044.58.	Rooms wet or dry-----	Dry.
Connected to water supply-----	Yes.	How ventilated-----	Natural draft. 6" vents from magazine terminating at traverse wall.
Connected to sewer-----	Yes.	Remarks-----	
Ty of latrine-----	Syphon.		
Type of data transmission-----	Telephone.		
Transmission Elevation intr. crest of battery-----	235.5		
Datum plane-----	M.L.L.W.		

ARMAMENT.

Emplacement or mortar No.	Guns or Mortars				Carriages					
	Cal. length	model	Serial No.	Manufacturer	mounted	Type	model	Serial No.	Manufacturer	Motor
1	** ONE EMPLACEMENT. GUN AND CARRIAGE REMOVED 1917.									
2										
3										
4										
5										
6										
7										
8										

HOISTS.

Emplacement Number	Type	Delivery	Motor					Date of transfer	Remodeled for long points. NO.
			Serial No. (HAND POWER)	Maker	H.P.	Volts	RPM		
1	HODGES	BACK							
2								Aug. 1, 1900	
3									
4									

SUPERSEDED: See Form 1, Oct. 1, 1927

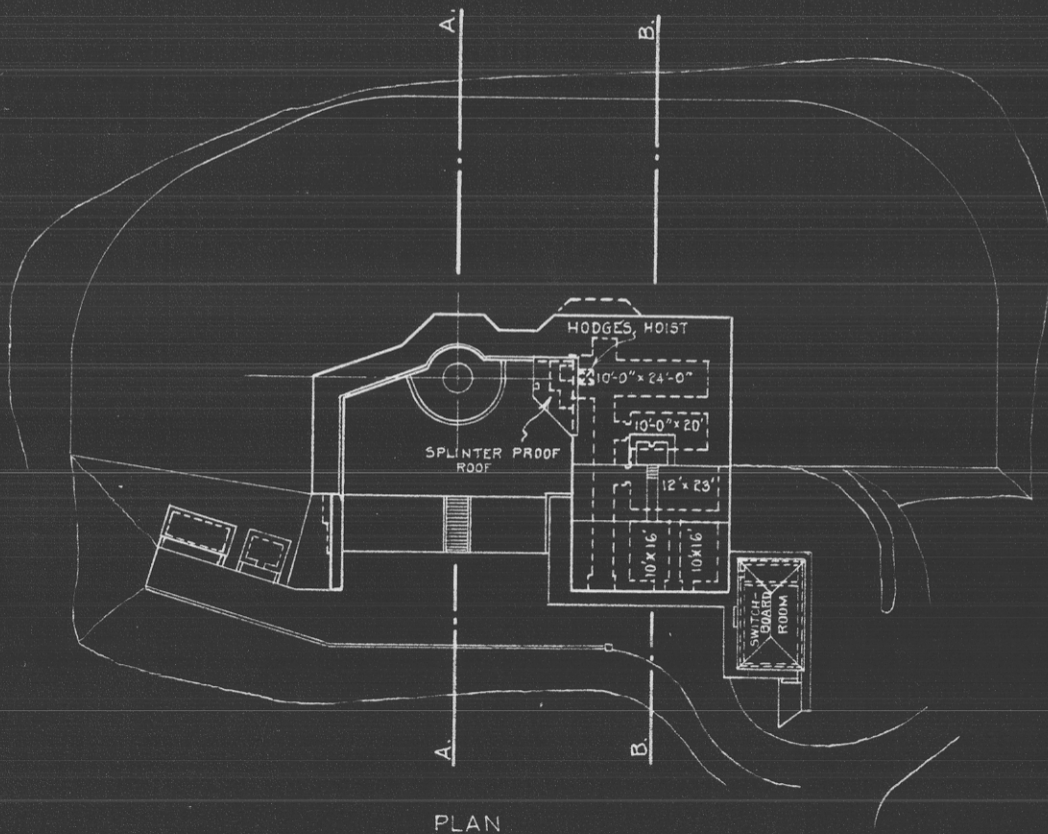
REPORT OF COMPLETED WORKS ~ SEACOAST FORTIFICATIONS
(BATTERY PLAN)

CORRECTED TO DEC. 1919

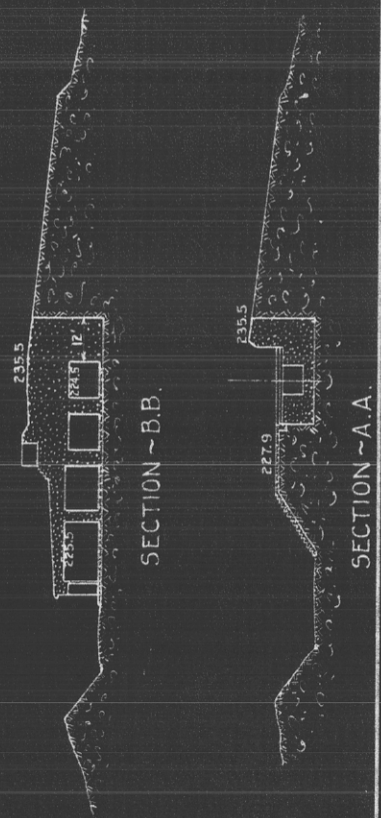
COAST DEFENSES OF SAN FRANCISCO, CAL.
FORT MCDOWELL
BATTERY WALLACE

No. of GUNS: 0 CALIBER: — CARRIAGE: 0
EMPT. FOR 8 IN. GUN DISAPPEARING CARRIAGE

FORM~7

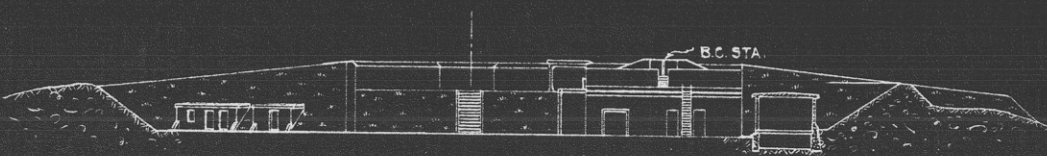


PLAN



SECTION ~ B.B.

SECTION ~ A.A.



REAR ELEVATION.

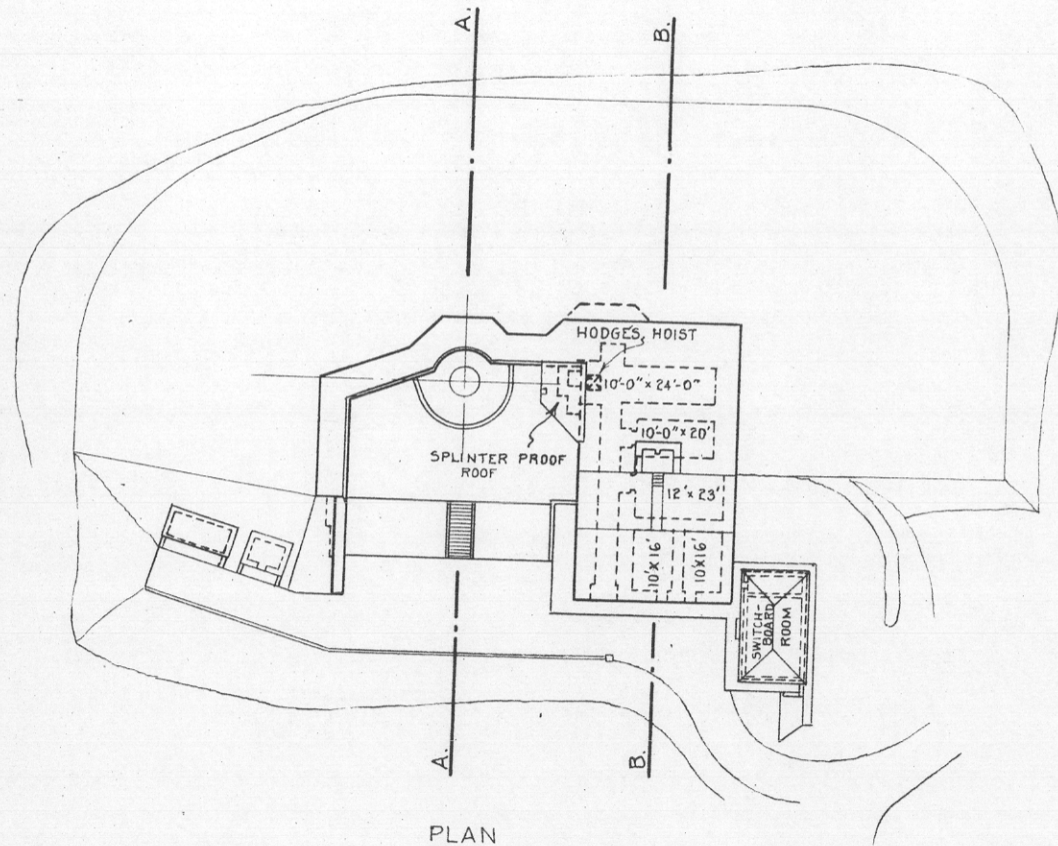
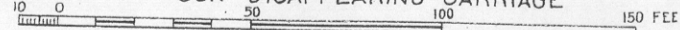
REPORT OF COMPLETED WORKS ~ SEACOAST FORTIFICATIONS
(BATTERY PLAN)

COAST DEFENSES OF SAN FRANCISCO, CAL
FORT M^cDOWELL
BATTERY WALLACE

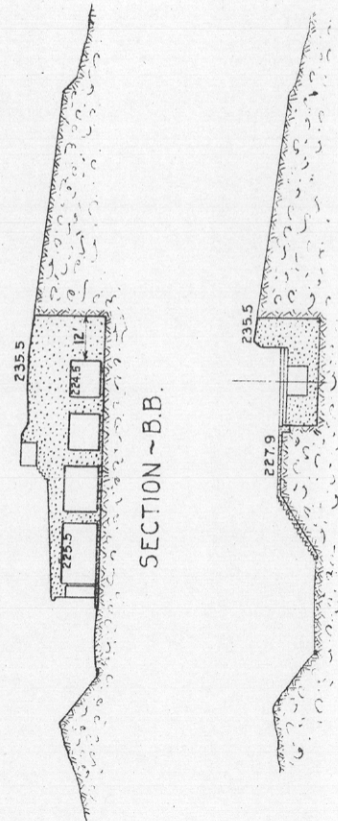
CORRECTED TO DEC. 1919

FORM~7

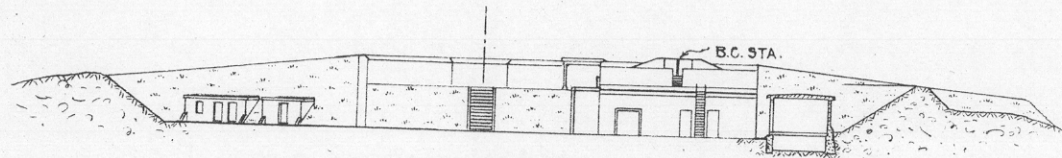
NO. OF GUNS : 0 CALIBER : — CARRIAGE : 0
EMPT. FOR 8" GUN DISAPPEARING CARRIAGE



PLAN



SECTION ~ B.B.



REAR ELEVATION.

REPORT OF COMPLETED WORKS -- SEACOAST FORTIFICATIONS
(Gun and Mortar Batteries)

COAST DEFENSES OF SAN FRANCISCO, CALIF.
FORT McDOWELL, CALIF.
BATTERY WALLACE

Form 1 Corrected to OCT 1 - 1927

No. of guns None ** Caliber 8-INCH Carriage Dis. LF

Battery commenced	1899.	Source of electric current	Battery Plant: 10-h.p. Hornsby-Akroyd Oil Engine belted to 6-k.w. 125-v. Eddy Generator
Battery completed	1900.		
Date of transfer	Aug. 1, 1900.	Max. kv. required for lights	2.3 k.w.
Material of construction	Concrete.	Max. kw. required for motors	No motors.
Portland or Rosendale cement	Portland.	Present condition of battery	Good.
Cost to date of transfer	\$20,044.58		
Connected to water supply	Yes.	Rooms wet or dry	Dry.
Connected to sewer	Yes.	How ventilated	Natural draft. 6" vents from magazine terminating at traverse wall.
Use of latrine	Syphon.		
Type of data transmission	Telephone.	Remarks-	
Traverse Elevation intr. crest of battery	235.5		
Datum plane	M.L.L.W.		

ARMAMENT.

Emplacement or mortar No.	Guns or Mortars					Carriages				
	Cal. length	model	Serial No.	Manufacturer	mounted	Type	model	Serial No.	Manufacturer	Motor
1										
2										
3	**ONE EMPLACEMENT. GUN AND CARRIAGE REMOVED 1917.									
4										
5										
6										
7										
8										

HOISTS.

Emplacement Number	Type	Delivery	Motor					Date of transfer	Remodeled for long points. NO.
			Serial No. (HAND POWER)	Maker	H.P.	Volts	RPM		
1	HODGES	BACK						Aug. 1, 1900.	
2									
3	Note: Winch of hoist removed and installed at District Radio Station, Fort Winfield Scott, Calif.								
4									

See Index Plat Rev. May 24, 1900 - Battery no longer under control of H.O. Commander. Magazines used for post storage purposes.

COAST DEFENSES OF San Francisco California

FORT McDowell BATTERY Wallace No. OF GUNS: 1 CALIBER: 8"

	EMPLACEMENT NUMBER 1.		EMPLACEMENT NUMBER 2.		EMPLACEMENT NUMBER 3.		EMPLACEMENT NUMBER 4.	
	FROM.	TO.	FROM.	TO.	FROM.	TO.	FROM.	TO.
1-a. Azimuth. _____	<u>128° 47'</u>							
b. Distance. _____	<u>2050.5</u>							
2-a. Model of Gun. _____	<u>1888</u>							
b. " " Carriage _____	<u>1896</u>							
c. Type of " _____	<u>Dis</u>							
3- Elevations of. _____								
a. Gun trunnions (in battery) _____	<u>237.70</u>							
b. Interior crest. _____	<u>235.50</u>							
c. Loading platform. _____	<u>227.90</u>							
4- Angle of depression. _____	<u>4° 39'</u>							
5- Limiting azimuths of field of fire as determined by: } a. construction of emplacement. } b. Interference by adjacent emplacements. } c. Interference of other obstacles external to emplacement. } d. Position of Ordnance stops. }	0	1	0	1	0	1	0	1
	<u>302° 05'</u>		<u>113° 25'</u>					
	<u>No interference</u>							
	<u>" "</u>							
	<u>317° 05'</u>		<u>100° 15'</u>					

NOTES.

1. Azimuth and distance of emplacement No. 2 are given with reference to No. 1; of No. 3, with reference to No. 2, etc. Azimuth and distance of No. 1, are given with reference to N.W. #2 Angel Id. { Latitude + - 37° 51' - 1260.8 meters } Longitude: - 122° 26' - 1052.7 "
3. Above plane of M.L.L.W.
- 5-c. Nature of obstacles: No obstacles.
- 2-c. Use one of following abbreviations or designations: Dis; Nondis.; Alt. gun-lift; Turret; Casemate; Ped.; B.P.

REPORT OF COMPLETED WORKS -- SEACOAST FORTIFICATIONS
(Gun and Mortar Batteries)

COAST DEFENSES OF SAN FRANCISCO, CAL.
FORT. McDOWELL
BATTERY. LEDYARD
No. of guns 0** Caliber 5-INCH Carriage BARB.

Form 1 Corrected to MARCH 1, 1920

Battery commenced	1900.	Source of electric current	Aerial line to Battery Wallace.
Battery completed	1900.		
Date of transfer	Aug. 1, 1900.	Max. kv. required for lights	.7 k.w.
Material of construction	Concrete.	Max. kw. required for motors	No motors.
Portland or Rosendale cement	Portland.		
Cost to date of transfer	\$20,044.58	Present condition of battery	Poor.
Connected to water supply	Yes.	Rooms wet or dry	Dry.
Connected to sewer	Yes.		
Type of latrine	No latrine.	How ventilated	Natural draft. 6" vent from magazine terminating at rear wall.
Type of data transmission	None.		
Transmission elevation of battery	Interior crest 137.33 M.L.L.W.	Remarks-	

ARMAMENT.

Emplacement or mortar No.	Guns or Mortars				Carriages						
	Cal.	length	model	Serial No.	Manufacturer	mounted	Type	model	Serial No.	Manufacturer	Motor
1											
2											
3	** TWO EMPLACEMENTS. GUNS AND CARRIAGES REMOVED TO BATTERY CALL, FORT MILEY, 1916.										
4											
5											
6											
7											
8											

HOISTS.

Emplacement Number	Type	Delivery	Motor						Date of transfer	Remodeled for long points.
			Serial No.	Maker	H.P.	Volts	RPM	Type of Control		
1										
2										
3										
4			NO HOISTS REQUIRED.							

See Index Plot Rev. May 22, 1936 - Battery no longer under control of H.Q. Commander. Magazines used for coast storage purposes.

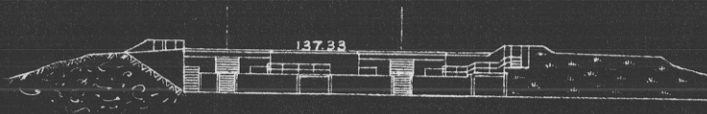
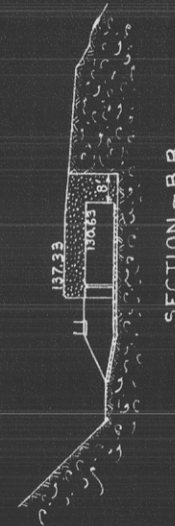
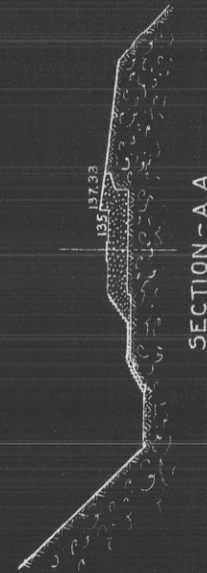
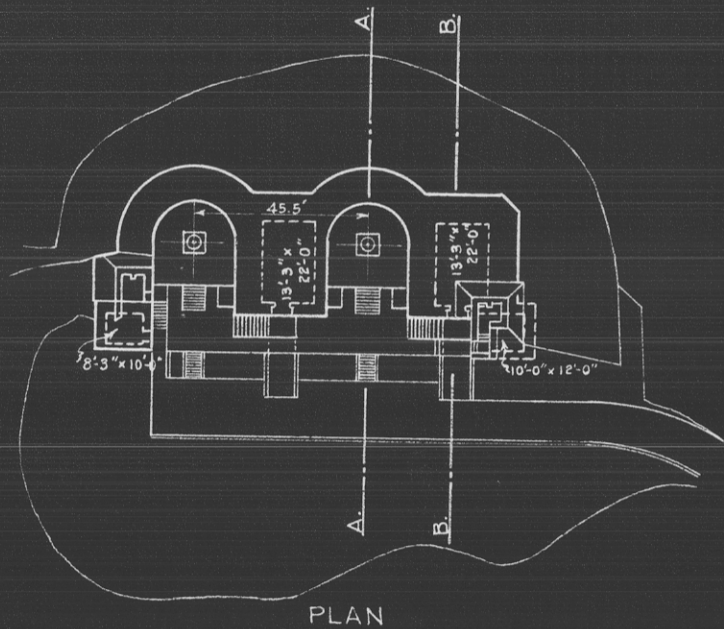
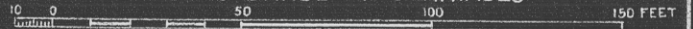
REPORT OF COMPLETED WORKS ~ SEACOAST FORTIFICATIONS
(BATTERY PLAN)

CORRECTED TO DEC. 1919.

COAST DEFENSES OF SAN FRANCISCO, CAL.
FORT MCDOWELL
BATTERY LEDYARD

NO. OF GUNS 0 : CALIBER — : CARRIAGE 0
EMPTS. FOR 5" GUNS BARBETTE CARRIAGES

FORM-7

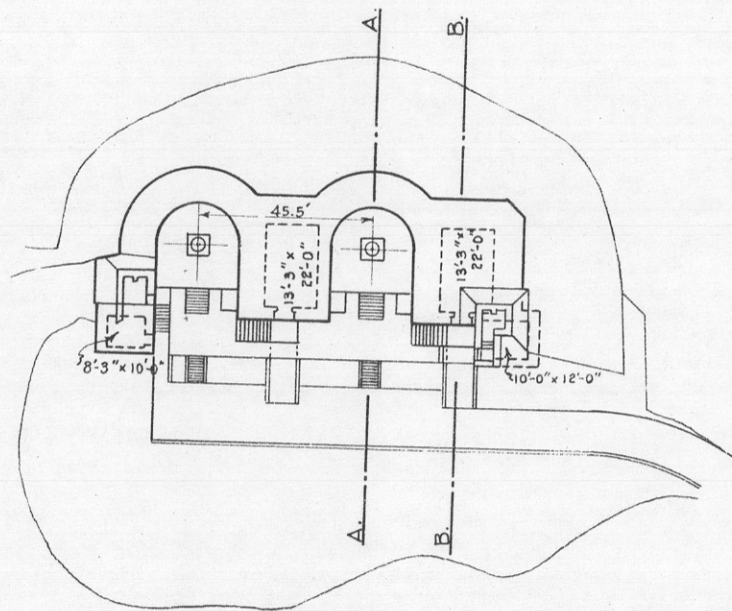
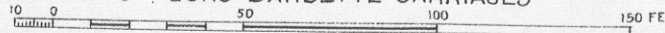


REPORT OF COMPLETED WORKS ~ SEACOAST FORTIFICATIONS
(BATTERY PLAN)

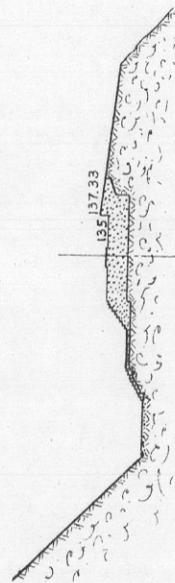
COAST DEFENSES OF SAN FRANCISCO, CAL
FORT M'DOWELL
BATTERY LEDYARD
NO. OF GUNS 0 : CALIBER — : CARRIAGE 0
EMPTS. FOR 5" GUNS BARBETTE CARRIAGES

CORRECTED TO DEC. 1919.

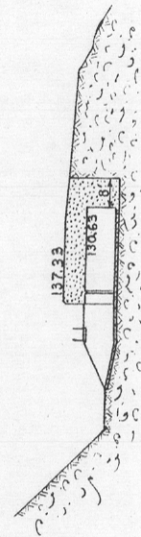
FORM-7



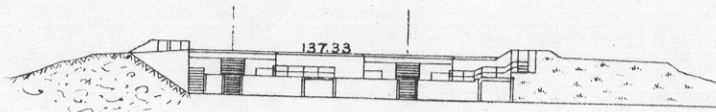
PLAN



SECTION ~ A.A.



SECTION ~ B.B.



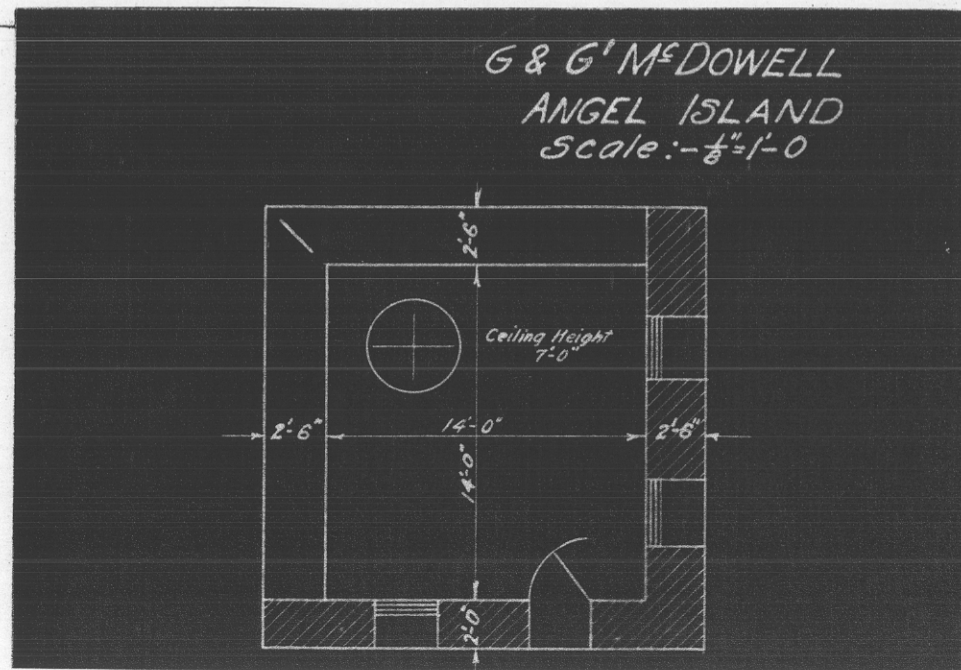
REAR ELEVATION

REPORT OF COMPLETED WORKS -- SEACOAST FORTIFICATIONS.
(Fire control or Torpedo Structures)

HARBOR
~~COAST~~ DEFENSES OF SAN FRANCISCO.
FORT. McDOWELL.
STRUCTURE. G. McDOWELL.

Form 2. Corrected to 1927

Location	: On hill 350 ft. in rear of Battery Wallace.	Type of data transmission	: Telephone. All equipment removed; batteries in Group disarmed.
Date of transfer	: Nov. 21, 1900.	Date of transfer	:)
Cost to that date	: \$1,219.02.	Cost of data transmission equipment	:) Installed by Signal Corps.
Type of construction	:	For tide stations give description of tide gauge	:
(a) Roof	: Iron.	For datum points give Forts from which visible	:
(b) Remainder of bldg.	: Concrete.	For dormitories give stations served	:
How concealed	: Earth parapet.	For cable hut give S.C. Type	: *Current was originally supplies from Battery Wallace over and aerial line which has become unserviceable.
How protected	: Earth parapet.		
Heights above concealment	: 4.0'		
Heights above protection	: 4.0'		
Conspicuous at 1500 yards	: From sea.		
Source of electric current	: * No source of electric current.		
Kilowatts required	: 2 k.w.		
Type of lighting fixtures	: W.T. fixtures and iron conduit.		
How heated	: Not heated.		
Connected to water mains	: Yes.		
Connected to sewer drain	: Yes.		
Type of latrine	: No latrine.		
Permanent or temporary installation	: Permanent.		
Present condition	: Poor.		
Reference of site	: 273.5 above M.L.L.W.		
Reference of instrument axis	: 273.6 above M.L.L.W.		
Type of observing inst.	: D.P.F.		
Type of plotting board	: None.		
Type and capacity of crane	:		
Max. dimensions of reel handled	:		



REPORT OF COMPLETED WORKS -- SEACOAST FORTIFICATIONS.
(Fire control or Torpedo Structures)

COAST DEFENSES OF SAN FRANCISCO.
FORT. McDOWELL.
STRUCTURE. CABLE HUT.

MAR 1 - 1920

Form 2.

Corrected to

Location	On beach 480 ft. to S.E. of Fort McDowell Wharf.	Type of data transmission	
Date of transfer	Not transferred.	Date of transfer	
Cost to that date	Paid for by Sig. Corps.	Cost of data transmission equipment	
Type of construction		For tide stations give description of tide gauge	
(a) Roof	Concrete.	For datum points give Forts from which visible	
(b) Remainder of bldg.	Concrete.	For dormitories give stations served	
How concealed	Earth parapet.	For cable hut give	
How protected	Earth parapet.	S.C. Type	Type "B".
Heights above concealment	Not above concealment.		
Heights above protection	Not above protection.		
Conspicuous at _____ yards	Not conspicuous from sea.		
Source of electric current	No current required.		
Kilowatts required	-		
Type of lighting fixtures	No fixtures installed.		
How heated	Not heated.		
Connected to water mains	No.		
Connected to sewer drain	Yes.		
Type of latrine	No latrine.		
Permanent or temporary installation	Permanent.		
Present condition	Good.		
Reference of site	14.0		
Reference of instrument	M.L.L.W.		
axis datum			
Type of observing inst.			
Type of plotting board			
Type and capacity of crane			
Max. dimensions of reel handled			

