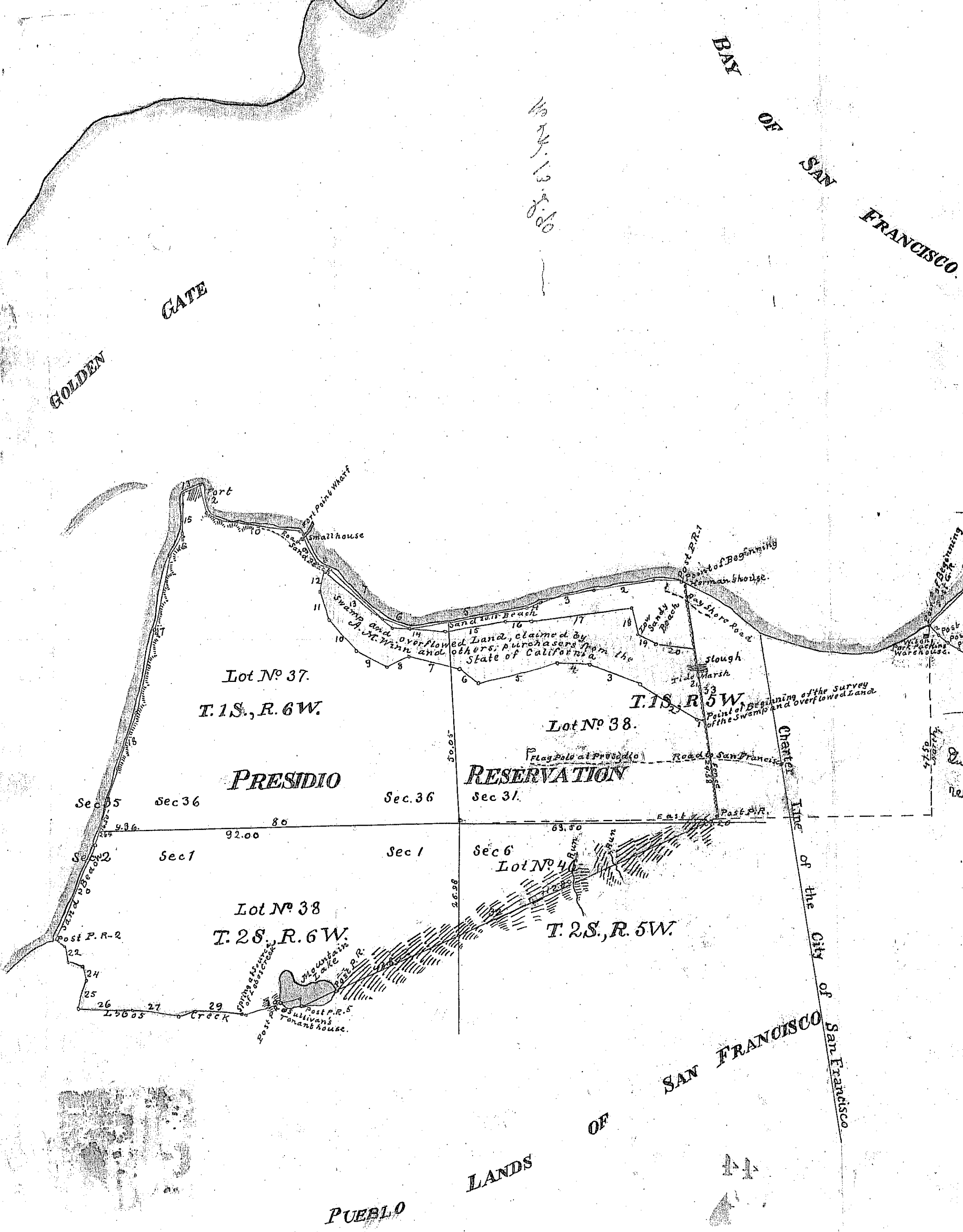


PLAT of the MILITARY RESERVATIONS of the PRESIDIO AND POINT SAN JOSE

Surveyed under instructions from the
U.S. SURVEYOR GENERAL
by
James T. Stratton, Dep. Surv.
March and April, 1866
Scale 20 chs to 1 inch
N 16° 30' E

No. 14. 13. 12. 11. 10. 9. 8. 7. 6. 5. 4. 3. 2. 1.



Presidio Reservation		Point San Jose Reservation	
No.	Course	Dist.	Dist.
1	N 71° 14' W	10.00	10.00
2	S 81° 14' W	14.00	14.00
3	N 76° 14' W	14.00	14.00
4	N 66° 14' W	14.00	14.00
5	N 81° 14' W	14.00	14.00
6	N 70° 14' W	14.00	14.00
7	N 46° 14' W	16.40	16.40
8	N 65° 14' W	3.70	3.70
9	N 25° 14' W	3.80	3.80
10	N 82° 14' W	21.70	21.70
11	N 48° 14' W	3.60	3.60
12	N 17° 14' W	7.00	7.00
13	S 70° 14' W	4.20	4.20
14	N 3° 14' W	8.00	8.00
15	N 32° 14' W	7.00	7.00
16	N 29° 14' W	7.00	7.00
17	N 18° 14' W	40.00	40.00
18	N 28° 14' W	15.34	15.34
19	N 18° 14' W	20.00	20.00
20	N 24° 14' W	23.70	23.70
21	N 61° 14' W	3.00	3.00
22	N 15° 14' W	31.75	31.75
23	N 67° 14' W	41.16	41.16
24	N 81° 14' W	3.35	3.35
25	N 17° 14' W	7.48	7.48
26	N 88° 14' W	14.00	14.00
27	N 82° 14' W	12.00	12.00
28	N 77° 14' W	4.22	4.22
29	N 83° 14' W	13.80	13.80
30	N 76° 14' W	15.43	15.43
31	South	2.24	2.24
32	N 67° 14' W	116.37	116.37

Area of Presidio Reservation	1382.22 Acres.
Swamps and Overflowed Land	119.12
Unpatented Presidio Reservation	1263.70
Area of Point San Jose Reservation	130.24
Aggregate	1393.34

See Act of Congress -
July 1-70 - published in G.O. #87 of 70 a Co
relatives to Point San Jose Reserve

The field notes of the Military Reservations of the Presidio and Point San Jose, from which this Plat has been made out, have been examined and approved, and are on file in this Office.
U.S. Surveyor General's Office,
San Francisco, California,
September 15th, 1866.

J. T. Stratton
U.S. Surv. Gen. Cal.

J. T. Stratton
1129
D. W. 11