

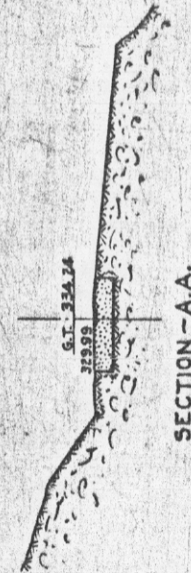
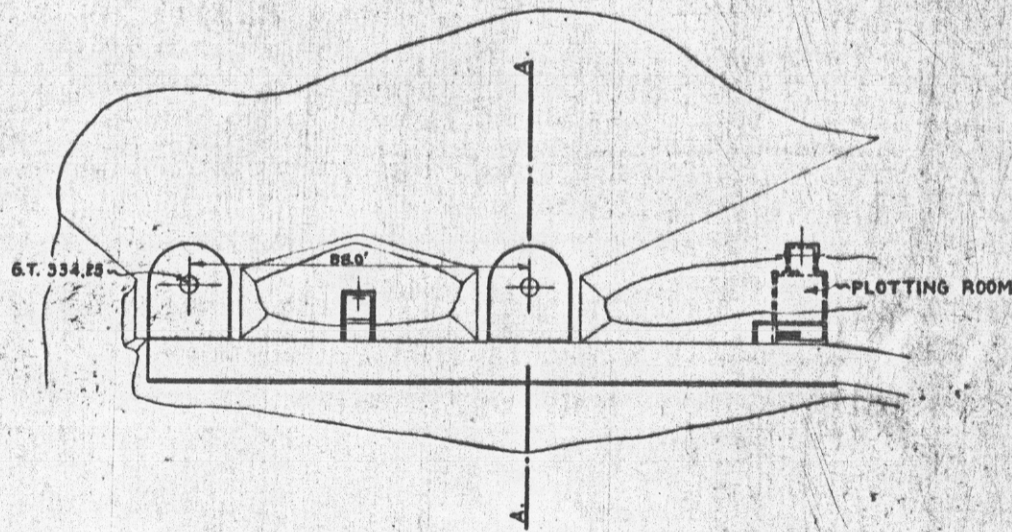
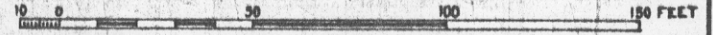


REPORT OF COMPLETED WORKS ~ SEACOAST FORTIFICATIONS  
(BATTERY PLAN)

COAST DEFENSES OF SAN FRANCISCO, CAL.  
FORT MILEY  
BATTERY LOREN D. CALL  
No. OF GUNS 2 : CALIBER 5 IN. : BARBETTE CARRIAGES

CORRECTED TO DEC. 1919.

FORM-7



REPORT OF COMPLETED WORKS -- SEACOAST FORTIFICATIONS  
(Gun and Mortar Batteries)

COAST DEFENSES OF SAN FRANCISCO, CALIF. ....

FORT MILEY .....

BATTERY LOREN D. CALL .....

Form 1 Corrected to SEPTEMBER 1, 1923.

No. of guns 0 Caliber Carriage 0

Battery commenced-----	Dec. 1914.	Source of electric current---	From Battery Chester Plant: Three 25-k.w. gas. motor sets.
Battery completed-----	1916.	Max. kv. required for lights---	.9
Date of transfer-----	June 13, 1916.	Max. kw. required for motors---	No motors.
Material of construction-----	Concrete.	Present condition of battery---	Good.
Portland or Rosendale cement---	Portland.	Rooms wet or dry-----	Dry.
Cost to date of transfer-----	\$3,719.97	How ventilated-----	Natural draft.
Connected to water supply-----	No.	Remarks-----	Plotting and observing rooms only; no magazines or galleries as yet constructed.
Connected to sewer drain-----	Yes.		
Type of latrine-----	No latrine.		
Type of data transmission-----	Telephone.		
Trunnion Elevation in loading battery platform-----	330.0		
Datum plane-----	M.L.L.W.		

ARMAMENT.

Emplacement or mortar No.	Guns or Mortars--					Carriages					
	Cal.	length	model	Serial No.	Manufacturer	mounted	Type	model	Serial No.	Manufacturer	Motor
1											
2											
3											
4											
5											
6											
7											
8											

GUNS AND CARRIAGES REMOVED.

TWO  
(PLATFORMS FOR 5-INCH GUNS ON BARBETTE CARRIAGES.)

HOISTS.

Emplacement Number	Type	Delivery	Motor					Date of transfer	Remodeled for long points.
			Serial No.	Maker	H.P.	Volts	RPM		
1									
2									
3									
4									

NO HOISTS REQUIRED.

REPORT OF COMPLETED WORKS ~ SEACOAST FORTIFICATIONS  
(BATTERY PLAN)

CORRECTED TO AUG. 1923.

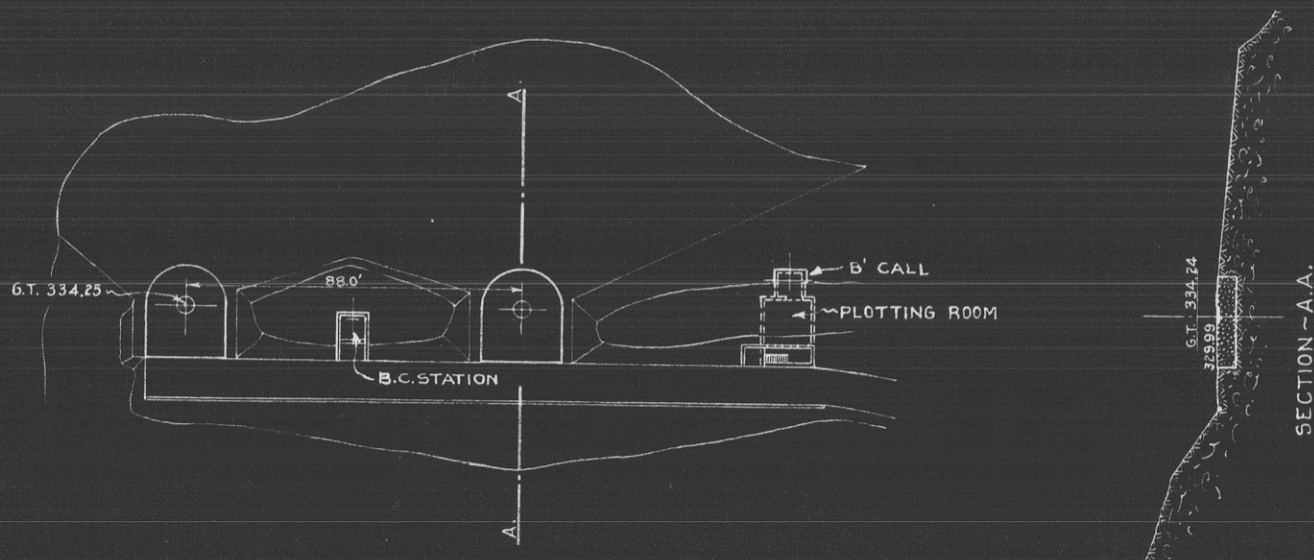
FORM~7

COAST DEFENSES OF SAN FRANCISCO, CAL.  
FORT MILEY

BATTERY LOREN D. CALL

No. OF GUNS 0 : CALIBER — : No. OF CARRIAGES 0.  
EMPTS FOR 5<sup>IN.</sup> GUNS, BARBETTE CARRIAGES

10 0 50 100 150 FEET



# COAST DEFENSES OF San Francisco, California

FORT Miley BATTERY Call NO. OF GUNS: 2 CALIBER: 5"

	EMPLACEMENT NUMBER 1.		EMPLACEMENT NUMBER 2.		EMPLACEMENT NUMBER 3.		EMPLACEMENT NUMBER 4.			
	FROM.	TO.	FROM.	TO.	FROM.	TO.	FROM.	TO.		
1-a. Azimuth.	171°10'		132°12'							
b. Distance.	400'		88'							
2-a. Model of Gun.	1900		1900							
b. " " Carriage	1903		1903							
c. Type of "	Ped.		Ped.							
3- Elevations of.										
a. Gun trunnions (in battery)	334.21		334.06							
b. Interior crest.	No interior crest constructed.									
c. Loading platform.	329.96		329.81							
4- Angle of depression.	4°45'		6°15'							
5- Limiting azimuths of field of fire as determined by:	FROM.	TO.	FROM.	TO.	FROM.	TO.	FROM.	TO.		
	01	01	01	01	01	01	01	01		
	a. Construction of emplacement. Gun plugs only are constructed at present.									
	342°40'		102°12'							
	111°00'		242°40'							
d. Position of Ordnance stops. No stops fitted.										

### NOTES.

1. Azimuth and distance of emplacement No. 2 are given with reference to No. 1; of No. 3, with reference to No. 2, etc. Azimuth and distance of No. 1, are given with reference to Cement. Latitude: - 37°46' - 1833.1 meters.  
Longitude - 122°30' - 536.0 "
3. Above plane of M. L. L. W.
- 5-c. Nature of obstacles: For Gun #1. - Slopes of Battery Chester.  
For Gun #2 - topography on left flank.
- 2-c. Use one of following abbreviations or designations: Dis.; Nondis.; Alt. gun-lift; Turret; Casemate; Ped.; B.P.