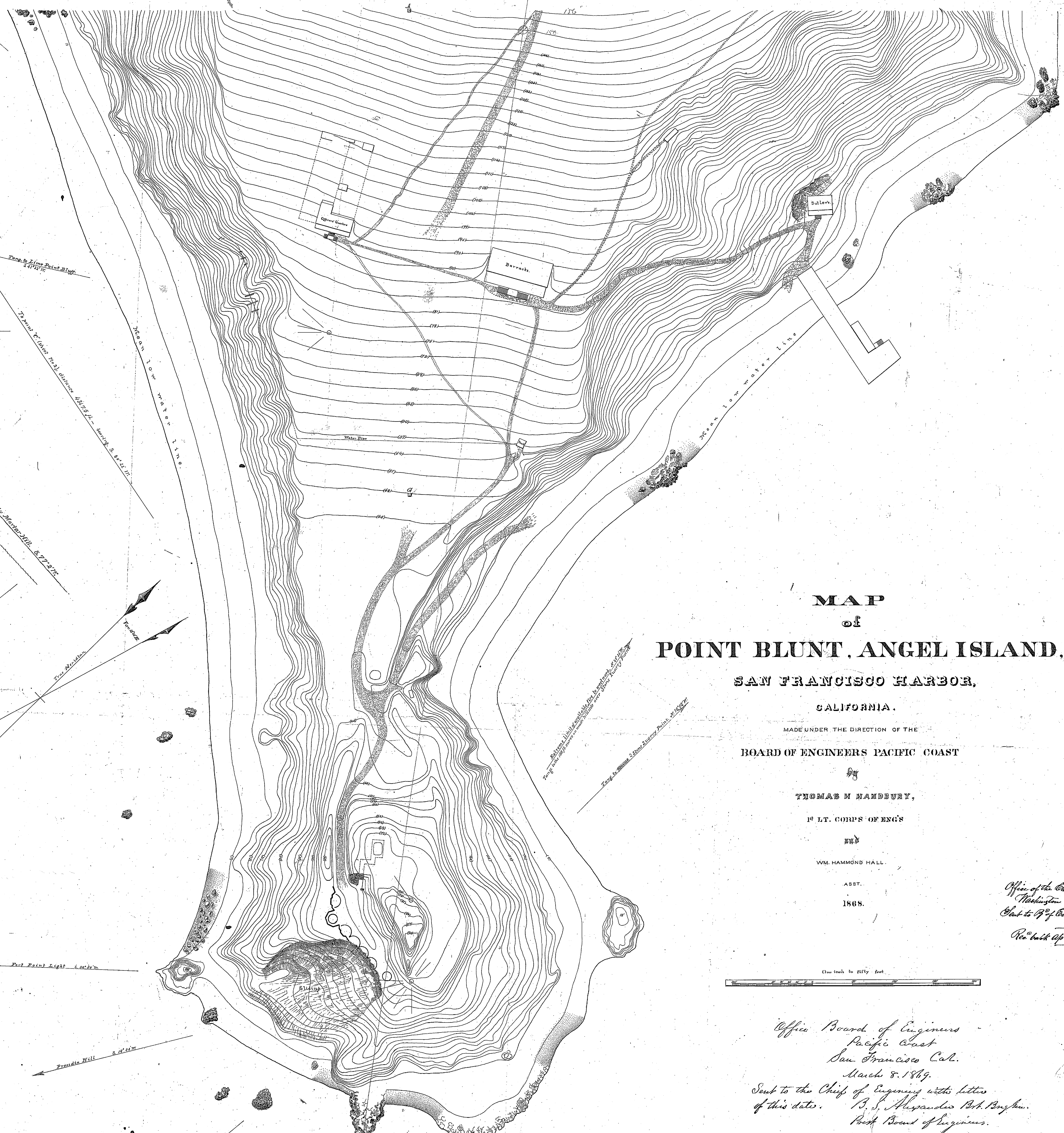


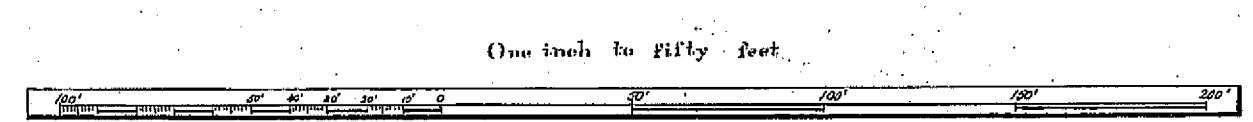
Drawer 97.
Sheet 5.



MAP
of
POINT BLUNT, ANGEL ISLAND,
SAN FRANCISCO HARBOR,
CALIFORNIA.

MADE UNDER THE DIRECTION OF THE
BOARD OF ENGINEERS PACIFIC COAST
By
THOMAS H. HANDBURY,
1ST LT. CORPS OF ENGS
AND
WM. HAMMOND HALL,
ASST.
1868.

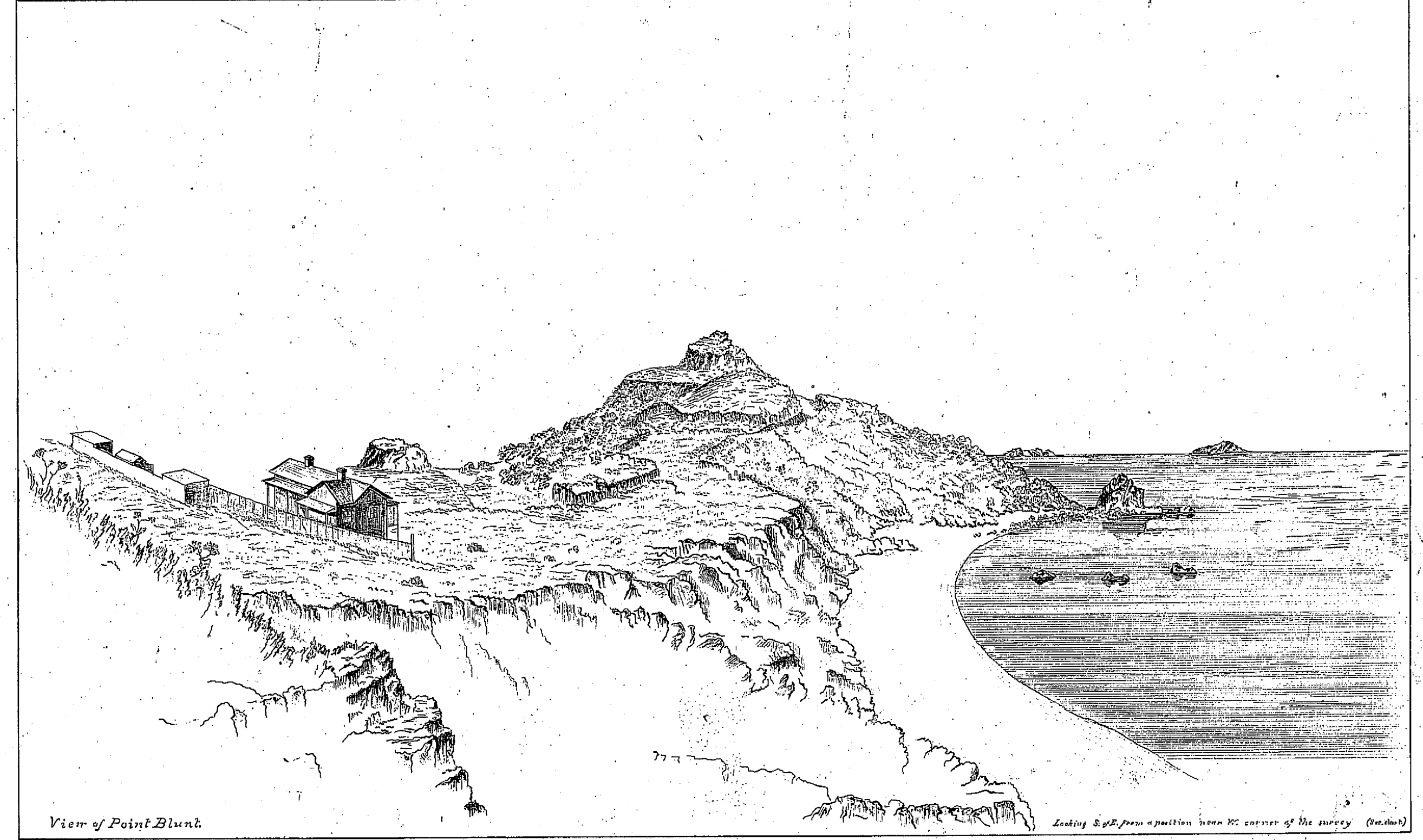
Office of the Chief of Engineers
Washington City, D.C., 1870
Sent to 9th of Corps for Pacific
1. 3. 1872.
Rec'd Oct 8, 1870. 1870.



Office Board of Engineers
Pacific Coast
San Francisco Cal.
March 8, 1869.
Sent to the Chief of Engineers with letters
of this date. A. S. Alexander 1st Lt. Engin.
Asst. Board of Engineers.

2116
1868

Notes.
At the point of a stone block, 6x8x8 in., is buried
one foot below the surface of the ground. Ref. 500 ft.
At the point of a stone block, 6x6x6 in., is buried
one foot below the surface of the ground. Ref. 47 ft.
The lines joining A and G leave at 47 ft.
All the bearings given are Magnetic.



View of Point Blunt.