

FINAL PROJECT OWNERSHIP MAP
(TYPE OF MAP)

STATE CALIFORNIA
 COUNTY SAN JOAQUIN
 DIVISION SOUTH PACIFIC
 DISTRICT SAN FRANCISCO
 SIXTH ARMY AREA

48 MILES S OF SACRAMENTO
 83 MILES E OF SAN FRANCISCO

TRANSPORTATION FACILITIES

A.T.&S.F. — W.P. — S.P. — RAILROAD
 STATE ROAD
 US 50 & 99 FEDERAL ROAD
 AIRLINE

ACQUISITION

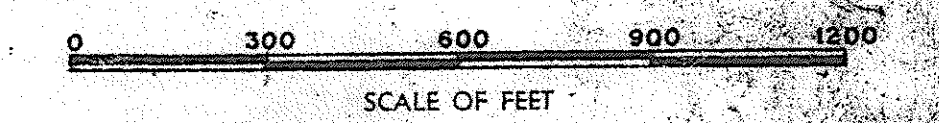
ACRES OWNED BY W.D.
 ACRES LEASED BY W.D.
 ACRES LEASED FROM W.D.
 ACRES TRANSFERRED TO W.D.
 ACRES DONATED TO W.D.
 ACRES OF EASEMENTS

DISPOSALS

ACRES SOLD
 ACRES TRANSFERRED
 ACRES EXCHANGED
 ACRES OTHERWISE

LEGEND

- RESERVATION LINE
- STATE OR PROVINCE LINE
- COUNTY LINE
- CIVIL DISTRICT PRECINCT
- LAND - GRANT LINE
- CITY, VILLAGE, OR BOROUGH
- CEMETERY, SMALL PARK, ETC.
- TOWNSHIP LINE
- SECTION LINE
- AREA UNDER LEASE
- LAND ACQUIRED



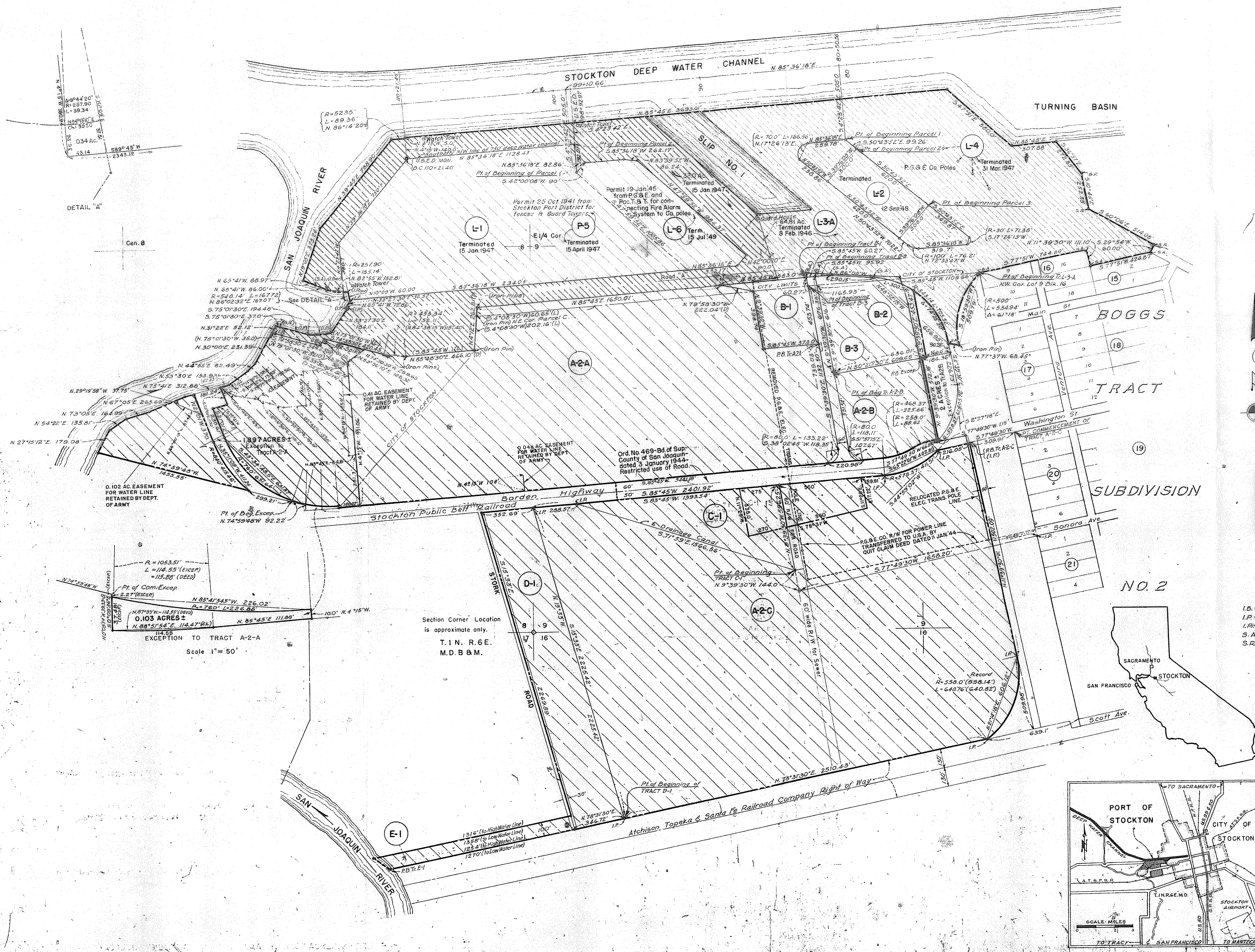
DEPARTMENT OF THE ARMY
 OFFICE OF THE DIVISION ENGINEER
 SOUTH PACIFIC DIVISION
REAL ESTATE

SHARPE GENERAL DEPOT
STOCKTON STORAGE ACTIVITY

RECOMMENDED: *James J. Stafford* ENGINEER DATE 2/14/45
 APPROVED: *Carl R. L. L...* DATE 2/14/45
 Chief, San Francisco Sub-office

DATE	BY	REVISION	APPROVED
10/29/48	LHC	DUE TO FINAL AUDIT	
6/29/48	ds	DISPOSAL TR. (DI) PORTION CI, A2C	
9/16/48	bis	REVD ACC. with G.O., NO 63, 248 Aug 1954	
11/31/57	jeq	Disposal of Tr. A-2/B, B-1, B-2, B-3, Portion A-2/A-B	
		P-1 added	

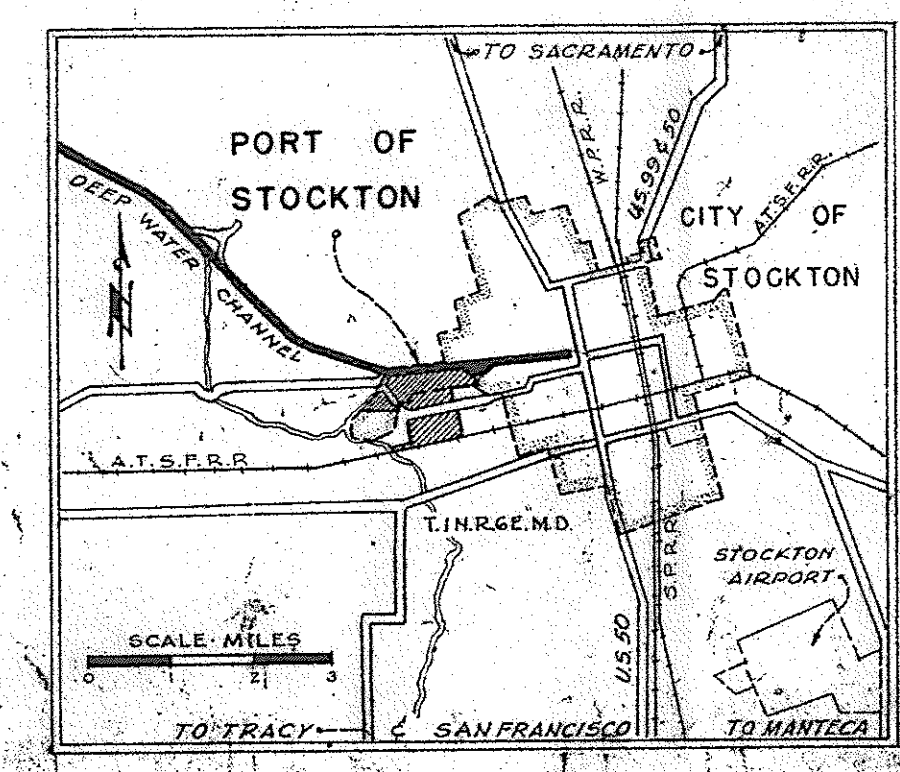
SHEETS 2 OF 3 DRAWING NO. F.E. 240



DETAIL "A"
 Cen. 8

0.107 ACRES
 Exception to Tract A-2-A
 0.103 ACRES
 Exception to Tract A-2-A
 Scale 1" = 50'

Section Corner Location is approximate only.
 T.I.N. R.G.E.
 M.D.B.&M.



VIQINITY MAP AUDITED No 2392